

MTA AS 162 N

Specifications

Merk	MTA
Type	AS 162 N
Product type	Air Cooled Chiller
Capaciteit kW	73,0
Koudemiddel	Freon
Koudemiddel Type	R404A / R507
Gewicht in kg.	1943
Afmetingen	3180 x 3400 x 1880mm (L x W x H)
Opmerkingen	Y.O.B. 2010 // 4 fans / 880 Rpm / 3.90kw / Ø800mm
Meer informatie?	Danfoss // Maneurop 4x Compressor NTZ271A4LR1A
Stock	1

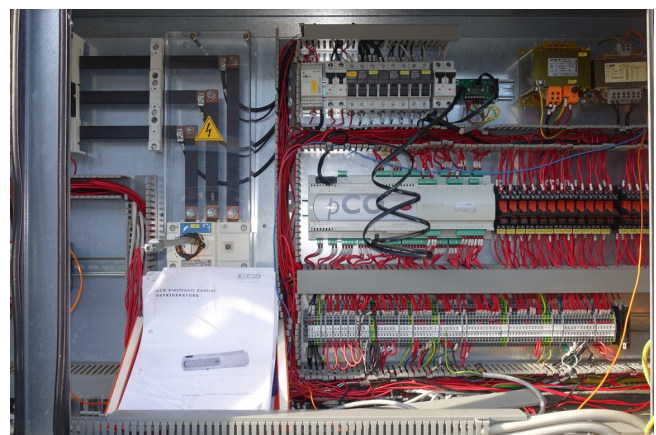


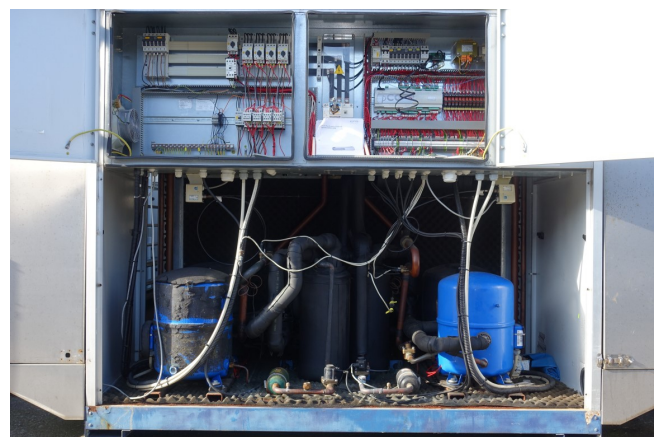
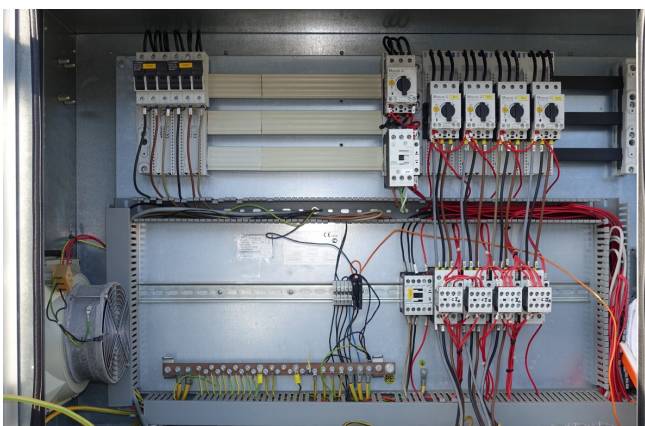
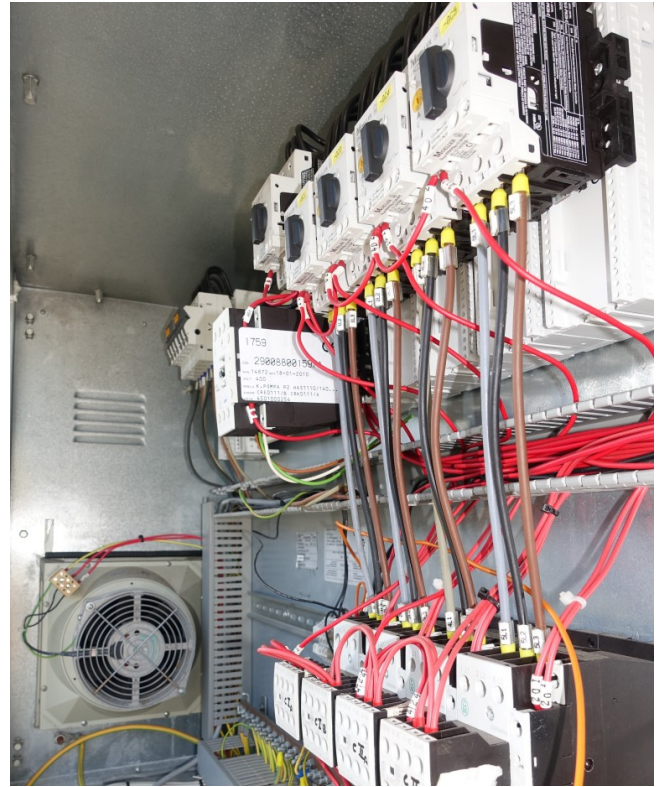
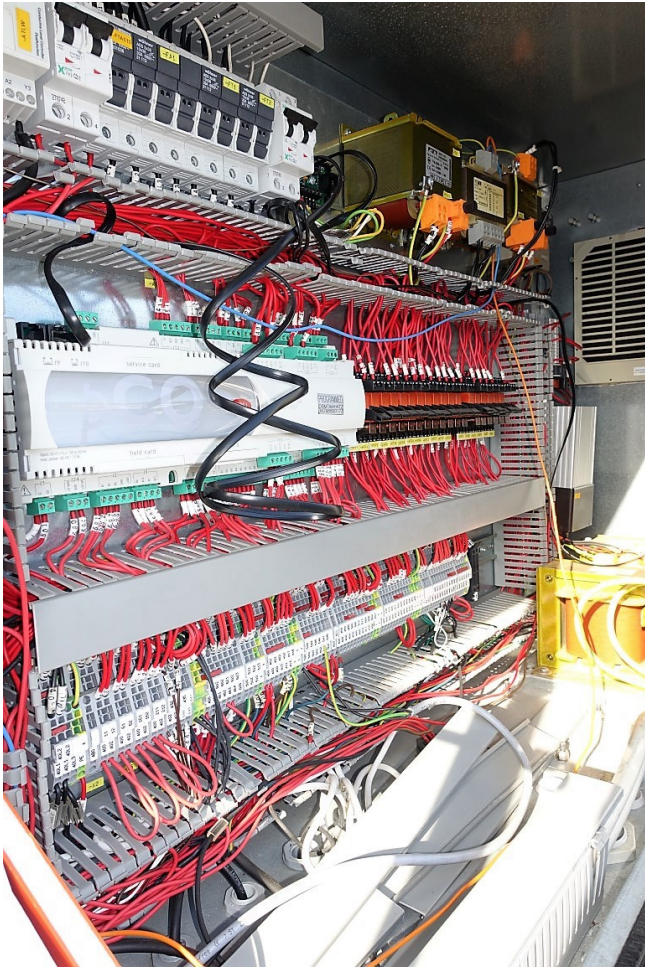
Description

Used MTA AS 162 N

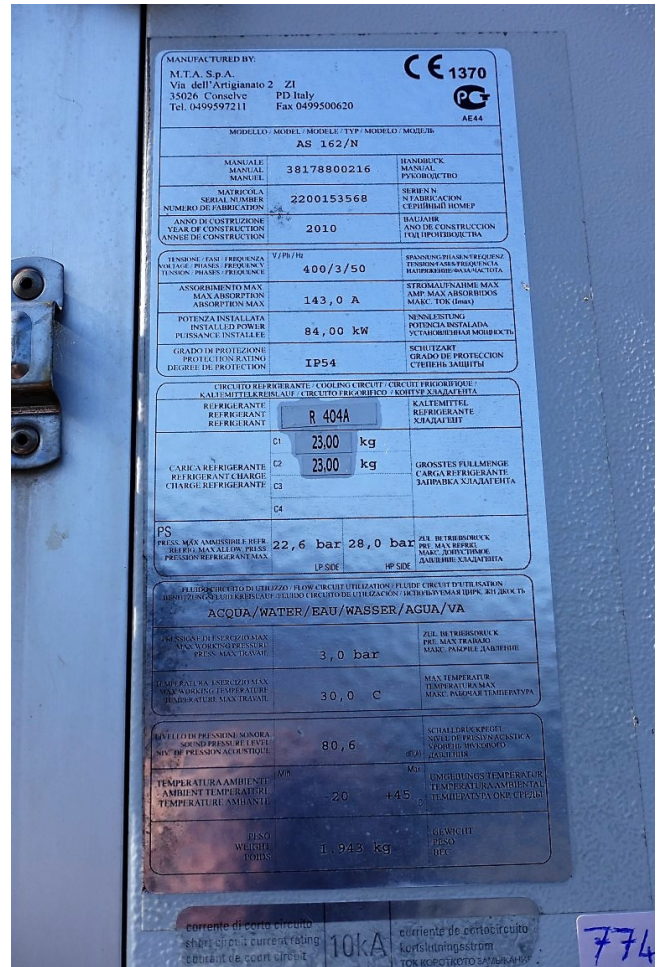
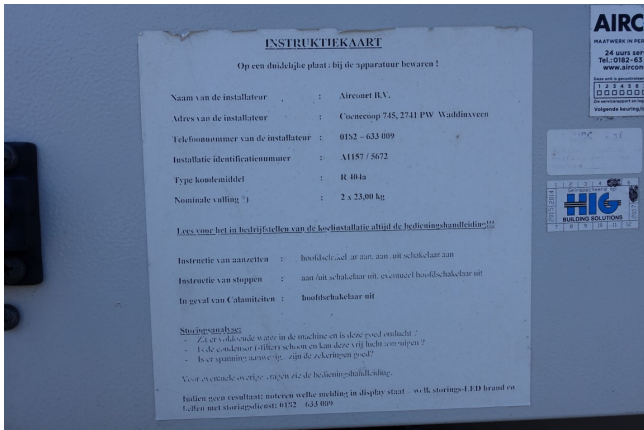
Watergekoelde chiller MTA AS 162 N / Y.O.B. 2010 / Dit apparaat heeft 4 ventilatoren / 880 tpm / 3.90kw / Ø800mm / 73.0kw met een gl-temperatuur van -6 / -10 ° C













Datasheet, performance data **Maneurop reciprocating compressor. NTZ271-4**

Performance data at 50 Hz, EN 12900 rating conditions, Suction temp. = 20 °C **R404A**

Cond. temp. in °C (t _c)	Evaporating temperature in °C (t _e)							
	-45	-40	-35	-30	-25	-20	-15	-10

Cooling capacity in W									
30	-	6 187	8 496	11 288	14 617	18 529	23 072	28 295	-
35	-	-	7 791	10 379	13 501	17 166	21 422	26 317	-
40	-	-	6 955	9 406	12 310	15 716	19 673	24 228	-
45	-	-	-	8 380	11 054	14 190	17 835	22 039	-
50	-	-	-	-	9 744	12 598	15 921	19 761	-
55	-	-	-	-	-	10 952	13 941	17 406	-
60	-	-	-	-	-	9 263	11 906	14 984	-

Power input in W									
30	-	4 562	5 420	6 247	7 070	7 887	8 695	9 493	-
35	-	-	5 541	6 445	7 350	8 255	9 156	10 052	-
40	-	-	5 623	6 607	7 598	8 594	9 592	10 589	-
45	-	-	-	6 728	7 809	8 899	9 997	11 100	-
50	-	-	-	-	7 975	9 164	10 365	11 577	-
55	-	-	-	-	-	8 382	10 691	12 015	-
60	-	-	-	-	-	9 549	10 988	12 408	-

Current consumption in A									
30	-	8.31	9.41	10.57	11.76	12.92	14.01	14.98	-
35	-	-	9.53	10.77	12.06	13.35	14.61	15.77	-
40	-	-	9.65	10.98	12.35	13.81	15.23	16.60	-
45	-	-	-	11.16	12.68	14.26	15.85	17.43	-
50	-	-	-	-	12.92	14.65	16.43	18.20	-
55	-	-	-	-	-	14.96	16.82	18.90	-
60	-	-	-	-	-	15.14	17.29	19.49	-

Mass flow in kg/h									
30	-	149	205	273	355	453	569	705	-
35	-	-	198	265	347	444	559	693	-
40	-	-	188	255	336	432	546	679	-
45	-	-	-	243	323	418	530	661	-
50	-	-	-	-	307	400	510	630	-
55	-	-	-	-	-	380	488	615	-
60	-	-	-	-	-	356	462	586	-

Coefficient of performance (C.O.P.)									
30	-	1.35	1.57	1.81	2.07	2.35	2.65	2.88	-
35	-	-	1.40	1.61	1.84	2.08	2.34	2.62	-
40	-	-	1.24	1.42	1.62	1.83	2.05	2.29	-
45	-	-	-	1.25	1.42	1.59	1.79	1.99	-
50	-	-	-	-	1.22	1.37	1.54	1.71	-
55	-	-	-	-	-	1.17	1.30	1.45	-
60	-	-	-	-	-	0.97	1.09	1.21	-

Nominal performance at to = -35 °C, t _c = 40 °C		
Cooling capacity	6 955	W
Power input	5 623	W
Current consumption	9.65	A
Mass flow	198	kg/h
C.O.P.	1.24	-



Pressure switch settings	
Maximum HP switch setting	27.7 bar(g)
Minimum LP switch setting	0.1 bar(g)
LP pump-down setting	0.1 bar(g)

Sound power data	
Sound power level	94.2 dB(A)
With acoustic hood	78.2 dB(A)

to: Evaporating temperature at dew point